



# **St Hugh's College**



## **Graduate Accommodation Information Booklet 2018-19**

## Index

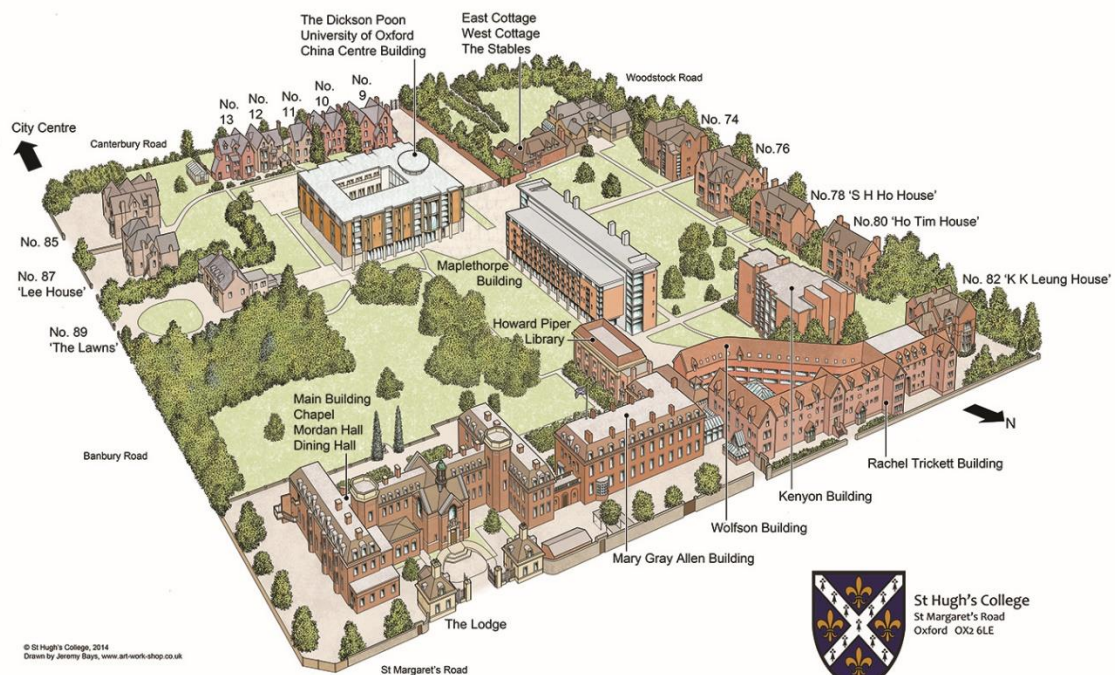
- Page 2 - Brief Overview**
- Page 3 - 87 Banbury Road**
- Page 5 - Dickson Poon China Centre**
- Page 6 - East Cottage**
- Page 7 - The Stables (Studio)**
- Page 8 - West Cottage**
- Page 9 - West Lodge**
- Page 10 - Room Banding Criteria**

## Brief Overview

At St Hugh's College we have 84 rooms available for graduates.

Of those 84 rooms, 69 are ensuite rooms with shared kitchen facilities, one accessible self-contained studio. A further 14 rooms are single rooms with shared bathroom and kitchen facilities, and we have one self-contained studio which offers accommodation to couples.

All our graduate accommodation is situated on College grounds in shared houses and the newly built Dickson Poon Building. All of the houses are occupied by graduate students only. The dedicated graduate areas are – 87 Banbury Road, East Cottage, West Cottage, The Stables, West Lodge (building opposite The Lodge), and the Dickson Poon Building. See map below.



All study bedrooms will be supplied with the following as a minimum –

Bed, Mattress, Mattress protector, Desk, Desk Chair, Desk lamp, Chest of Drawers or storage space provided in the built-in wardrobe, Wardrobe, Easy Chair, Bedside Table (if space), Noticeboard or Whiteboard.

A description of each house and room can be found in the following pages.

## **87 Banbury Road – MCR House**

No of Bedrooms: - 11  
Of which are ensuite: 5  
No of Kitchens: - 3  
No of Toilets: - 5  
No of Baths: - 1  
No of Showers: - 3



Front View



Back View

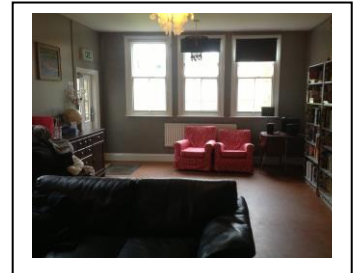
### **Basement –**

Ladies, gents and disabled toilet facilities  
(Additional to above figures)

Large TV lounge area

Large kitchen consisting of 1 x Fridge/Freezer,  
1 x Cooker, 1 x Microwave, 1 x kettle,  
1 x Toaster and Table and Chairs

Laundry Facilities (chargeable)

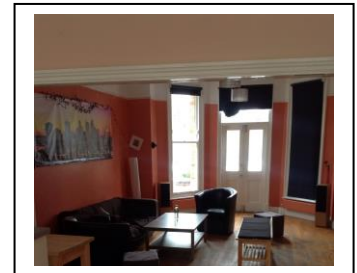
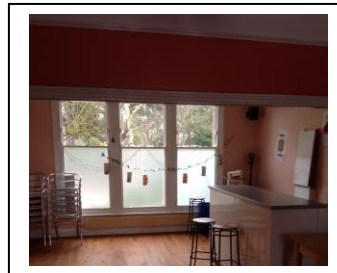


### **Ground Floor –**

Large Common/Party Room

Small Kitchen area

MCR Computer Room



**\*If choosing this house (especially rooms 4 & 5) please remember it is the MCR house where social evenings are arranged and do take place in the Common/Party Room; they can go on until the early hours.**

### **First Floor –**

Large Kitchen consisting of 2 X Fridges, 1 x Freezer, 1 x Cooker, 1 x Microwave, 1 x Kettle, 1 x Toaster and Table and Chairs

Shower room with shower cubicle, toilet and sink

### **Room 1 – Band 2 (12.14m<sup>2</sup>) –**

A band 2 room situated on the lower landing next to a shower room which is only shared with one other room as the rest in this area are ensuite. The room has windows to the side and back of the room both facing inside college.

### **Room 2 – Band 2 (10.31m<sup>2</sup>) – Ensuite**

A band 2 room with an ensuite bathroom consisting of a shower, sink and toilet, situated on the lower landing. The room has one window to the side facing the Banbury Road.

**Room 3 – Band 2 (13.24m<sup>2</sup>)**

A band 2 room situated on the lower landing. The nearest shower room is just down the corridor and only shared by one other room as the other rooms in this area are ensuite. The room has a window that faces into college.

**Room 4 – Band 7 (20.56m<sup>2</sup>) – Ensuite**

A band 7 room situated on the upper landing next to the kitchen. The room has a bay window which faces into college.

**Room 5 – Band 6 (15.62m<sup>2</sup>) – Ensuite**

A band 6 room situated on the upper landing opposite the kitchen. The room has 2 windows facing the Banbury Road.

**Room 6 – Band 7 (22.98m<sup>2</sup>) – Ensuite**

A band 7 room situated on the upper landing opposite the kitchen. The room has 2 windows facing the Banbury Road.

**Second Floor –**

Kitchen consisting of 1 x Fridge/Freezer, 1 x Fridge, 1 x Cooker, 1 x Microwave, 1 x Kettle, 1 x Toaster and Table and Chairs.

2 x shower rooms with shower cubicle, toilet and sink

Separate toilet with sink

Bathroom with bath, toilet and sink

**Room 7 – Band 2 (13.13m<sup>2</sup>)**

A band 2 room situated on the lower landing of the second floor. The room has windows to the side and back of the room both facing inside college grounds.

**Room 8 – Band 2 (10.18m<sup>2</sup>) – Ensuite**

A band 2 room with an ensuite bathroom consisting of a shower, sink and toilet, situated on the lower landing of the second floor. The room has one window to the side facing the Banbury Road.

**Room 9 – Band 2 (13.29m<sup>2</sup>)**

A band 2 room situated on the lower landing of the second floor. The room has a window that faces into college.

**Room 10 – Band 2 (12.61m<sup>2</sup>)**

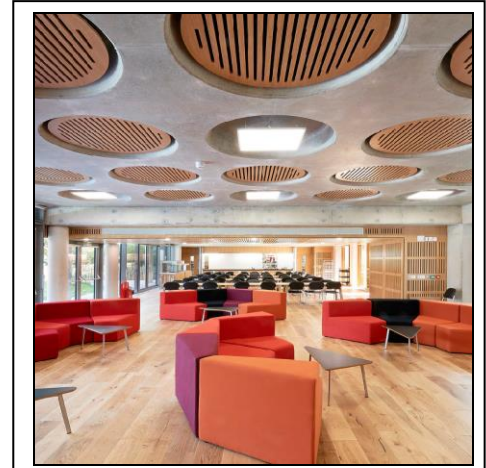
A band 2 room situated on the upper landing of the second floor. The room has sloping eaves and one window which faces into college.

**Room 11 – Band 1 (10.72m<sup>2</sup>)**

A band 1 room situated on the upper landing of the second floor. The room has sloping eaves and one window to the side which faces the Banbury Road.

## **Dickson Poon Building**

No of Bedrooms: -	63
No of Kitchens: -	8
Lifts:	2
Band 3:	£545.00 - 19 m <sup>2</sup>
Band 5:	£575.00 – 20.4m <sup>2</sup>



### **63 high quality en-suite graduate bedrooms**

The building is split into two wings: The Andrew Dilnot Wing and The Wolfson Foundation Wing.

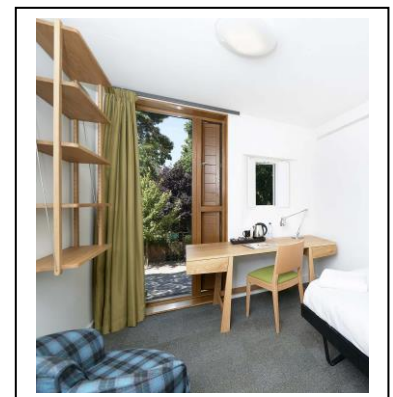
Andrew Dilnot Wing – accommodates graduate students on 9 month leases only. Tenancies commence 27th September and end on 26th June. This is to allow the College to generate conference and events revenue over the summer.

Wolfson Foundation Wing – accommodates students on 12 month leases. Tenancies commence 27th September and end on 26th September the following year.

There are two lifts in the building accessing all levels. On the ground floor of the building is the Wordsworth Tea Room, which is open 9.30am- 4.30 pm during term time for anyone wishing to purchase additional breakfast, lunch or snacks.

All study bedrooms will be supplied with the following as per the minimum requirements–

Bed, Mattress, Mattress protector, Desk, Desk Chair, Desk lamp, Chest of Drawers, Wardrobe, Easy Chair, Bedside Table (if space), Noticeboard or Whiteboard.



## East Cottage (72 Woodstock Road)

No of Bedrooms :-	3
No of Kitchens:-	1
No of Toilets:-	1
No of Baths:-	1
No of Showers:	1
First floor –	



Kitchen consisting of 1 x Fridge/Freezer, 1 x Cooker, 1 x Microwave, 1 x Kettle, 1 x Toaster

Dining area consisting of table and chairs

Bathroom with bath, shower over bath, sink and toilet

### **Room 1 – Band 7 (30.66m<sup>2</sup>)**

A band 7 room situated at the front of the property. This is the largest room in College. The room has many windows facing the Principal's lawn and the Fellows' garden.

### **Room 2 – Band 1 (10.27m<sup>2</sup>)**

A band 1 room situated in the front of the property. The room has a window which faces the Principal's lawn.

### **Room 3 – Band 2 (14.14m<sup>2</sup>)**

A band 2 room situated at the back of the property. The room has a window which faces into College.

## The Stables (72 Woodstock Road) – Studio

The studio consists of 3 rooms.

There is a large bedroom/lounge/dining area.

In this area there is a double bed, wardrobe, chest of drawers, sofa and lounge chair, coffee table, dining table and chairs.

Off this room is a kitchen with a sink, cooker, Fridge, microwave, kettle and toaster and a bathroom With a toilet, sink, bath and over bath shower.



## **West Cottage (72 Woodstock Road)**

No of Bedrooms :-	3
No of Kitchens:-	1
No of Toilets:-	1
No of Baths:-	1
No of Showers:	1



### **Ground Floor –**

Kitchen consisting of 1 x Fridge/Freezer, 1 x Cooker, 1 x Microwave, 1 x Kettle, 1 x Toaster

Bathroom with bath and sink

Separate toilet with sink

### **Room 1 – Band 4 (17.1m<sup>2</sup>)**

A band 4 room situated at the front of the house. The room has a window facing the Principal's lawn.

### **First Floor –**

#### **Room 2 – Band 4 (16.8m<sup>2</sup>)**

A band 4 room situated at the front of the house. The room has a window which faces the Principals lawn.

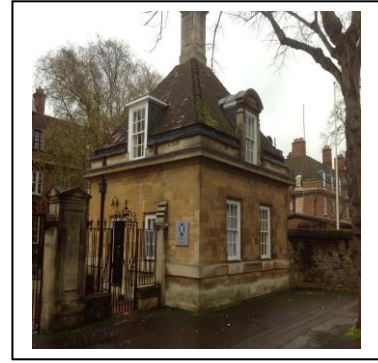
#### **Room 3 – Band 4 (16.8m<sup>2</sup>)**

A band 4 room situated at the rear of the house. The room has a window which faces into College.



## **West Lodge (Opposite Main Lodge)**

No of Bedrooms :-	3
No of Kitchens:-	1
No of Toilets:-	1
No of Baths:-	1
No of Showers:	1



### **Ground Floor –**

Kitchen consisting of 1 x Fridge, 1 x Freezer, 1 x Cooker, 1 x Microwave, 1 x Kettle,  
1 x Toaster and Table and chairs

Bathroom with bath, shower, toilet and sink

### **Room 1 – Band 4 (12.31m<sup>2</sup>)**

A band 4 room situated to the front of the house. The room has two windows, one facing the porters lodge and the other one facing St Margaret's Road.

### **First floor –**

#### **Room 2 – Band 4 (12.23m<sup>2</sup>)**

A band 4 room situated to the front of the house. The room has two windows, one facing the porters lodge and the other one facing St Margaret's Road.

#### **Room 3 & 4 – Band 2 (14.62m<sup>2</sup>)**

A band 2 room situated to the rear of the house. When you rent this you get two rooms. Both rooms are on the first floor and one houses your bed, wardrobe and chest of drawers and has a window facing into college, whilst the second room has your desk and bookcase and has a window also facing into college..

## Room Banding Criteria

Less than 12.0	= 1	No of Rooms	= 8
12.01 – 15.0	= 2	No of Rooms	= 17
15.01 – 20.0	= 3	No of Rooms	= 20
20.01 – 25.0	= 4	No of Rooms	= 22
25.01 +	= 5	No of Rooms	= 5
Studios		No of Rooms	= 1
Dickson Poon	=	No of Rooms	= 63

All rooms are banded purely on their size and all ensuite rooms have been lifted one band, with the exception of the following -

- Rooms in West Lodge have been lifted one band as it is a detached house with only 3 occupants.

## Rooms in each Band

Band 1	-	87 BR 11, East Cottage 2
Band 2	-	87 BR 1, 87 BR 2, 87 BR 3, 87 BR 7, 87 BR 8, 87 BR 9, 87 BR 10, East Cottage 3, West Lodge 3 / 4
Band 3	-	<b>DPB WFW</b> 111, 112, 113,114, 115,116, 117, 118, 211, 212,213, 214, 215, 216, 311, 312, 313, 314, 315, 316, 317, <b>DPB ADW</b> 102, 103, 104, 105, 106, 107, 202, 203,204,205, 206, 207, 302, 303, 304, 305, 306, 307
Band 4	-	West Cottage 1, West Cottage 2, West Cottage 3, West Lodge 2, West Lodge 1
Band 5	-	<b>DPB WFW</b> 119, 120, 121, 210, 217, 218, 219, 220, 221, 222, 223, 224, 310, 318, <b>DPB ADW</b> 101, 108, 109, 201, 208, 209, 301, 308, 309
Band 6	-	87 BR 5
Band 7	-	87 BR 4, 87 BR 6, East Cottage 1
Studio	-	The Stables, DPB WFW 110

## Banding Costs 2017-18

Band 1	-	£502.00
Band 2	-	£532.00
Band 3	-	£545.00
Band 4	-	£557.00
Band 5	-	£575.00
Band 6	-	£593.00
Band 7	-	£625.00
Studio	-	£725.00 – single occupancy price only. Additional charges will apply when occupied by a couple.