



St Hugh's College
UNIVERSITY OF OXFORD

Boardroom and Emily Wilding Davison Room

Main Building

Boardroom

A fantastic traditional room for small meetings and cosy dinners. Conveniently located adjacent to the main entrance and to the other ground floor suites.

Emily Wilding Davison

Named after the college's most famous suffragette alumna and WSPU activist, Emily Wilding Davison, who read English in 1895 and achieved first class honours in the university examinations for women. A delightfully quaint lounge style room located adjacent to the boardroom with interlinking door. Perfect for drinks receptions prior to dinner, or for a room lunch when having meetings in the Boardroom.

Toilets

Toilet facilities, including an accesible toilet with baby changing facilities, are located a short distance along the corridor.



Boardroom



Boardroom

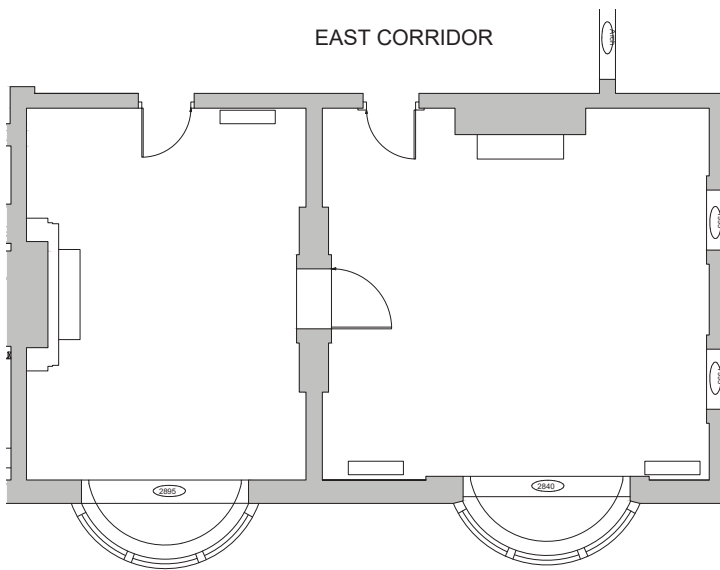


Emily Wilding Davison Room



Emily Wilding Davison Room

	Theatre	Classroom	Boardroom	U Shape	Rounds	Cabaret	Banquet	Reception
Main Building								
Boardroom	-	-	24	-	-	-	24	30
Emily Wilding Davison Room	15	-	16	-	10	-	10	25



Dimensions

Boardroom -

Width: 6m

Length: 6.2m

Emily Wilding Davison Room -

Width: 4.5m

Length: 6m

AV Equipment

Portable equipment can be set up as required.

Key Features

- Large bay window overlooking the main College grounds
- Easy access from main College entrance
- Traditional setting
- Flat access