



St Hugh's College
UNIVERSITY OF OXFORD

Maplethorpe Office

Maplethorpe Building

Completed in 2000, the building comprises of three light and airy event spaces, including Maplethorpe Hall, Maplethorpe Seminar Room and Maplethorpe Office. This self-contained facility also offers en-suite accommodation for residential guests outside of University term time.

Maplethorpe Office

Original the room was designed as an office space for event organisers running large events in the Maplethorpe Hall, hence the name. We have since found that it also offers a great modern space for smaller meetings up to 20 people, or as a breakout space for larger events.

Catering

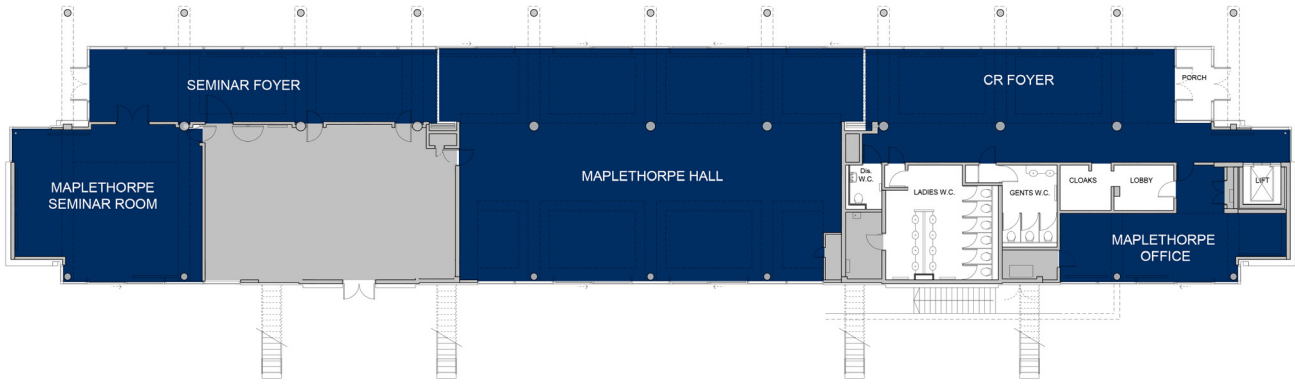
Generally we serve refreshments and buffet lunches from outside the room in the Canterbury Road foyer which is shown on the floor plan on the next page of this fact sheet.

Toilets

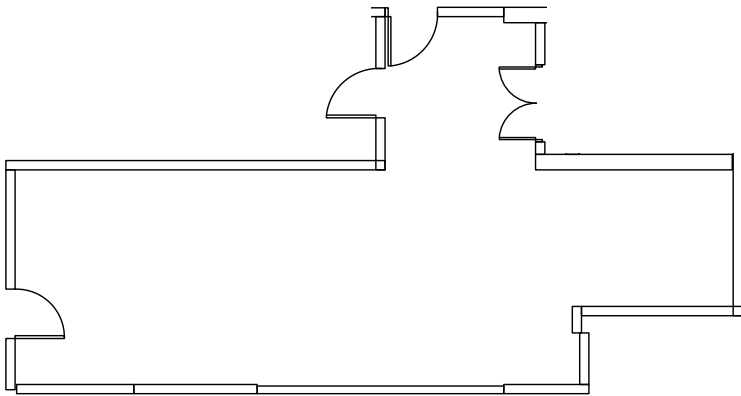
Toilet facilities, including an accesible toilet, are located in the Canterbury Road foyer shown on the following floor plan.



	Theatre	Classroom	Boardroom	U Shape	Rounds	Cabaret	Banquet	Reception
Maplethorpe suite								
Maplethorpe Office	20	12	12	-	-	-	-	20



CANTERBURY ROAD
FOYER



Dimensions

Width: 3.5m

Length: 9m

Height: 2.75m

AV Equipment

- Projector with VGA & HDMI input
- Laptop (Windows & Microsoft Office)

Key Features

- Large windows
- Direct garden access
- Complete flat level access
- Accessible toilet
- Flexible furniture layouts
- Conference & celebration use
- Wifi access
- Portable coat rails