



St Hugh's College
UNIVERSITY OF OXFORD

Mordan Hall

Main Building

Mordan Hall is one of the most loved and traditional spaces in St Hugh's College. To an early generation, between the World Wars, it was the College Library. Later it was used to stage plays and musicals, lectures and prize-givings. It evokes fond memories for generations of St Hugh's senior members and in 2008 was completely refurbished along with creating the four adjacent breakout rooms that are the Hamlin & Dobbs rooms.

Mordan Hall

This flat floor space is positioned on the first floor with lift access and can accommodate up to 144 people in theatre style. Including presentation technology and microphones, along with air-conditioning and portable stage.

Catering

Generally we serve refreshments and buffet lunches or dinners from outside the room, in the Hamlin Gallery. The room is also great for dinners and drinks receptions

Toilets

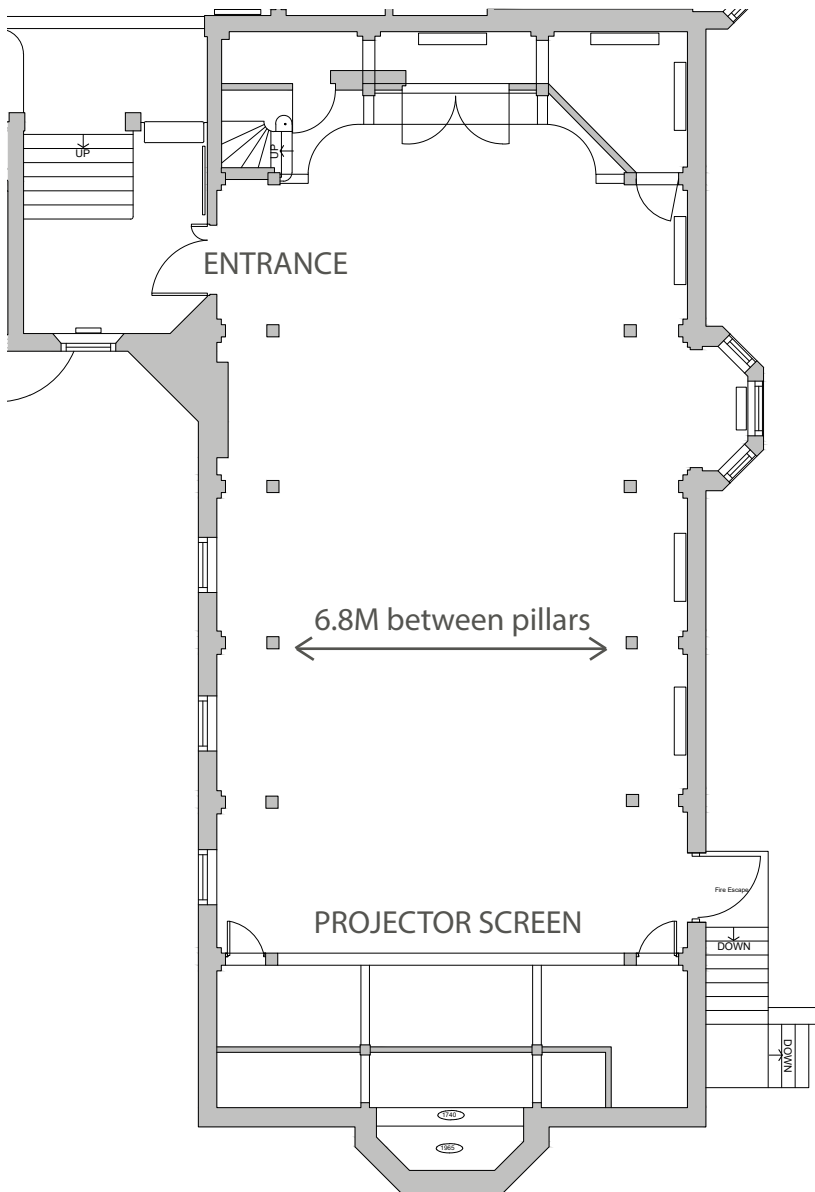
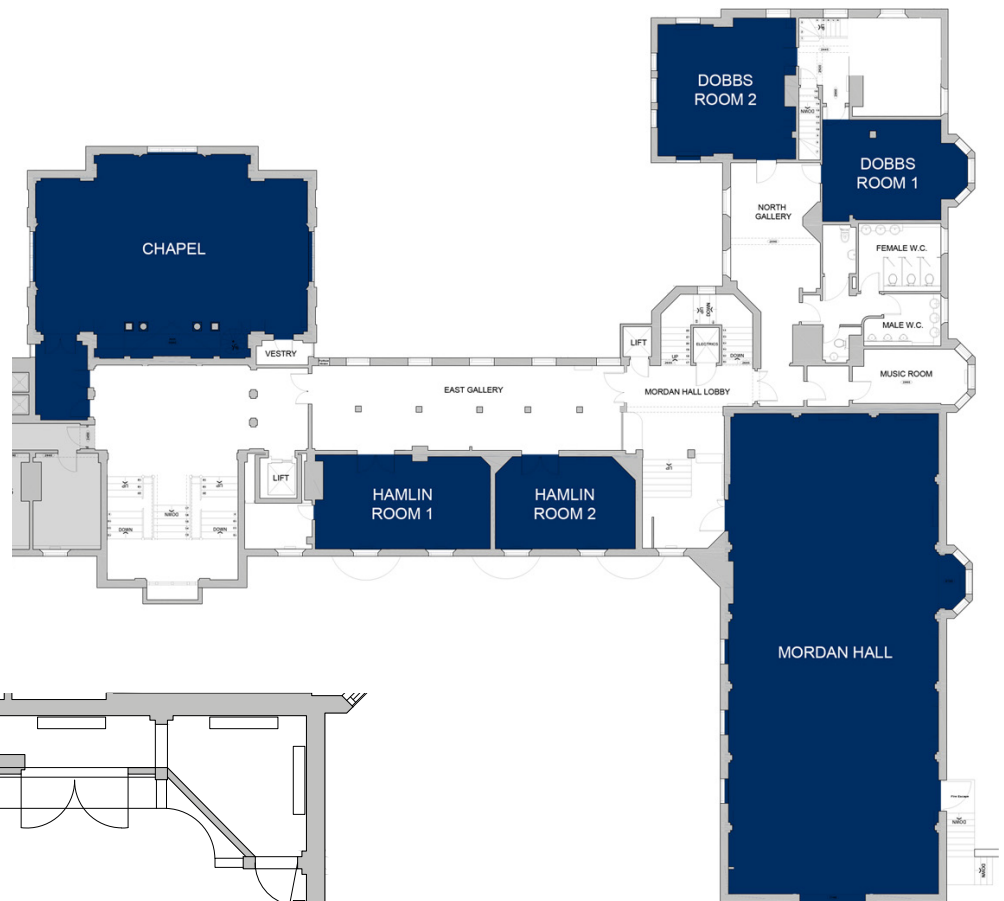
Toilet facilities, including an accesible toilet, are located just outside the room.



Mordan Hall, 1928



	Theatre	Classroom	Boardroom	U Shape	Rounds	Cabaret	Banquet	Reception
Maplethorpe suite								
Mordan Hall	144	50	40	40	80	64	100	120



Dimensions

Width: 8.7m

Length: 15.7m

Height: 3.4m (to lights)

AV Equipment

- Projector with VGA & HDMI input
- Laptop (Windows & Microsoft Office)
- Lectern & microphone
- Up to 2 wireless microphones
- Conference sound system
- Hearing loop system

Key Features

- Traditional style
- Views over gardens
- Accessible toilet
- Flexible furniture layouts
- Conference & celebration use
- Removable stage
- Wifi access
- Air conditioning system
- Portable coat rails