



Conferences and Events



St Hugh's College
UNIVERSITY OF OXFORD



FOREWORD

St Hugh's College is a traditional University of Oxford College set within fourteen and a half acres of quiet, exclusive leafy North Oxford. We pride ourselves on professional delivery of a wide range of events, from small meetings and dinners, to celebrations, conferences and weddings.



St Hugh's College
UNIVERSITY OF OXFORD

Founded in 1886, our Main Building and Mary Gray Allen Building form the original part of College.

With a unique blend of traditional spaces in a tranquil setting with excellent facilities, exceptional cuisine and professional customer service, St Hugh's is your perfect Oxford venue.

01865 274424
conferences@st-hughs.ox.ac.uk

St Hugh's College,
St Margaret's Road,
Oxford,
OX2 6LE





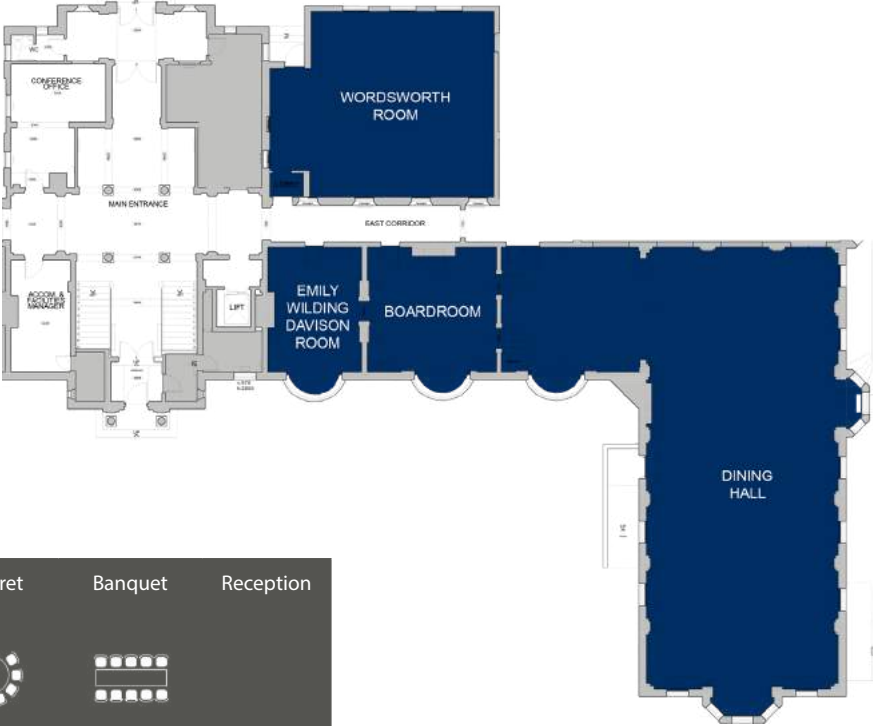
Boardroom

Main Building Ground Floor Suites

Boardroom

A fantastic traditional room for small meetings and cosy dinners. Conveniently located adjacent to the main entrance and to the other ground floor suites.

Main Entrance



	Theatre	Classroom	Boardroom	U Shape	Rounds	Cabaret	Banquet	Reception
Main Building								
Dining Hall	-	-	-	-	-	-	200	100*
Wordsworth Room	60	20	30	24	50	40	60	60
Boardroom	-	-	24	-	-	-	24	30
Emily Wilding Davison Room	15	-	16	-	10	-	10	25

* Assuming 100 people will be dining in the same room

Wordsworth Room and Emily Wilding Davison Room
Our Wordsworth Room is great for meetings or dinners of up to 60 people. Adjacent to this room is the Emily Wilding Davison Room, which works well as a lounge area for both the Wordsworth Room and the Boardroom, or pre dinner drinks.



Wordsworth Room



Emily Wilding Davison Room



Emily Wilding Davison Room

The image shows the interior of Mordan Hall, a large, ornate room with a high, vaulted ceiling and arched windows. The room is filled with rows of dark wooden chairs and tables, arranged in a lecture hall or classroom style. A large, curved wooden balcony with a decorative railing is visible in the foreground. The room is lit by several large, round pendant lights hanging from the ceiling. A blue semi-transparent overlay covers the center of the image, and the text "Mordan Hall" and "Hamlin & Dobbs Rooms" is written in white. There are also four diamond-shaped geometric shapes (two light blue and two dark blue) arranged in a cross pattern around the text.

Mordan Hall

Hamlin & Dobbs Rooms



Mordan Hall



Mordan Hall suite

Mordan Hall is one of the most loved and traditional spaces in St Hugh's College. To an early generation, between the World Wars, it was the College Library.

Later it was used to stage plays and musicals, lectures and prize-givings. It evokes fond memories for generations of St Hugh's senior members and in 2008 was completely refurbished along with creating the four adjacent breakout rooms that are the Hamlin & Dobbs rooms.



Mordan Hall, 1928

Mordan Hall

Recently refurbished, this multipurpose flat floor space is positioned on the first floor and can accommodate up to 144 people in theatre style.

Mordan Hall includes presentation technology and microphones when required, along with air-conditioning and portable stage.

Hamlin and Dobbs Rooms

Four rooms are available in the Mordan Hall Suite. These provide breakout rooms for larger meetings in Mordan Hall, or are perfect for smaller individual meetings.



Mordan Hall



Mordan Hall



Mordan Hall



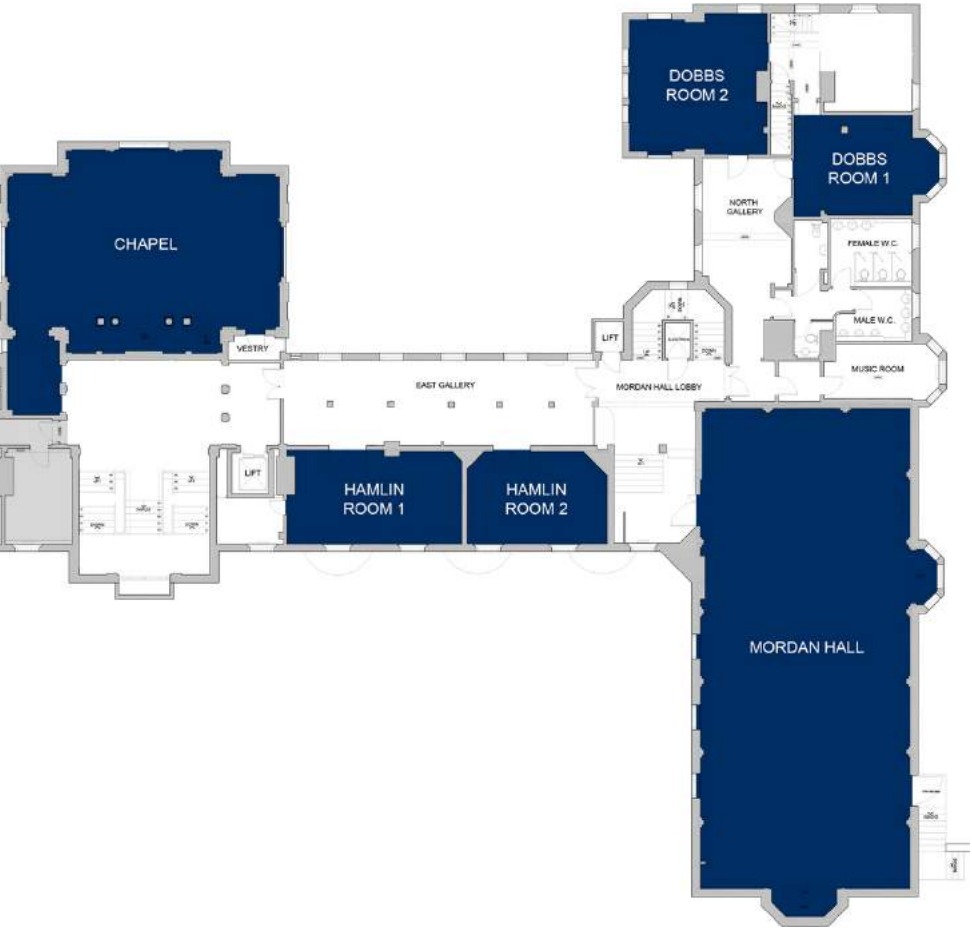
Hamlin Room 1










Dobbs Room 2



St Hugh's College Chapel



	Theatre	Classroom	Boardroom	U Shape	Rounds	Cabaret	Banquet	Reception
								
Mordan Hall suite								
Mordan Hall	144	50	40	40	80	64	100	120
Hamlin Room 1	30	14	18	-	-	-	-	30
Hamlin Room 2	20	8	14	-	-	-	-	20
Dobbs Room 1	20	8	14	-	-	-	-	20
Dobbs Room 2	30	14	18	12	-	-	-	30





Maplethorpe Hall Seminar Room & Office



Maplethorpe suite

Completed in 2000, the building comprises three light and airy event spaces, including our largest function space, Maplethorpe Hall.

This self-contained facility also offers en-suite accommodation for residential guests outside of University term time.

Maplethorpe Hall

A modern meeting space which can hold events of up to 300 people in a variety of styles. This unique ground floor space offers floor-to-ceiling glass, with views over the beautiful gardens.



Seminar Room and Office

The Maplethorpe Seminar Room offers great meeting space for stand-alone meetings or as a breakout area for larger events in the Main Hall. There is also a small office which is available for the use of event organisers, or can be used as an individual room for small meetings.



	Theatre	Classroom	Boardroom	U Shape	Rounds	Cabaret	Banquet	Reception
Maplethorpe suite								
Maplethorpe Hall	220	90	50	40	120	104	180	300
Maplethorpe Seminar Room	60	30	30	24	50	48	60	60
Maplethorpe Office	20	12	12	-	-	-	-	20



Maplethorpe Hall



The Dickson Poon University of Oxford China Centre Building

1

Hu, Leung, Ho, and Lee
Scholars' Room
Ho Tim
Seminar Room
Winston C. S. Wong
Seminar Room



The Dickson Poon University of Oxford China Centre Building

The Dickson Poon University of Oxford China Centre Building, opened by HRH The Duke of Cambridge in 2014 is a hub created to draw together interdisciplinary research and teaching covering many aspects of Chinese Culture.

This stunning building is housed in the grounds of St Hugh's College and features state-of-the-art conference and events facilities, including flexible space for lectures, breakout sessions, meetings, training, events, dinners, celebrations, accommodation, and more.



Lecture Theatre (Showing theatre 1 & 2 combined)

Lecture Theatre

Two 50 seat theatres open up to make one large space with the latest in audio visual technology, air-conditioning and smart boards.

Seminar Rooms and Wordsworth Tea Room

There are four Seminar Rooms available, two large and two slightly smaller, all fitted with air-conditioning.

There is also the Wordsworth Tea Room, which is a great dining and entertainment space, but can also work as a main meeting room for larger numbers.



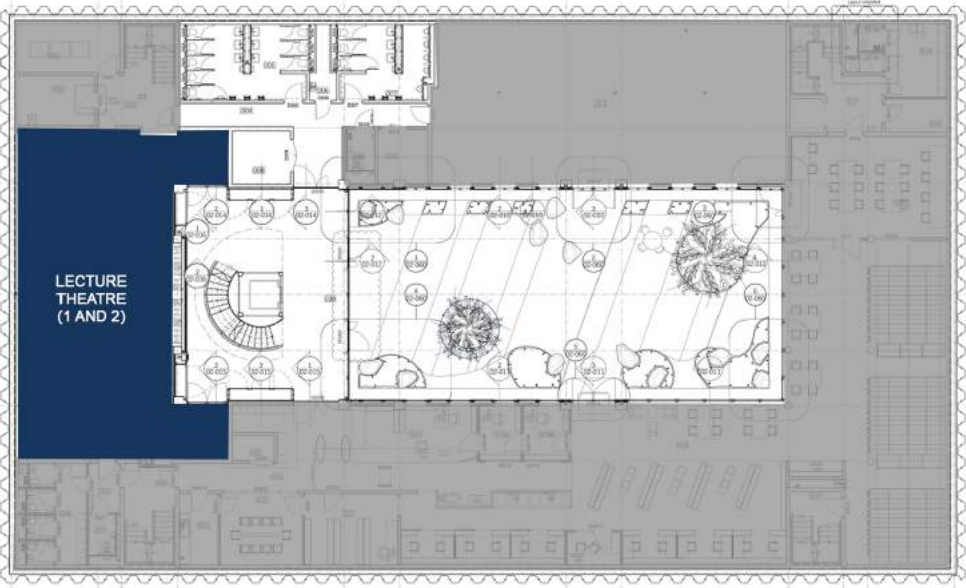
Louey Seminar Room



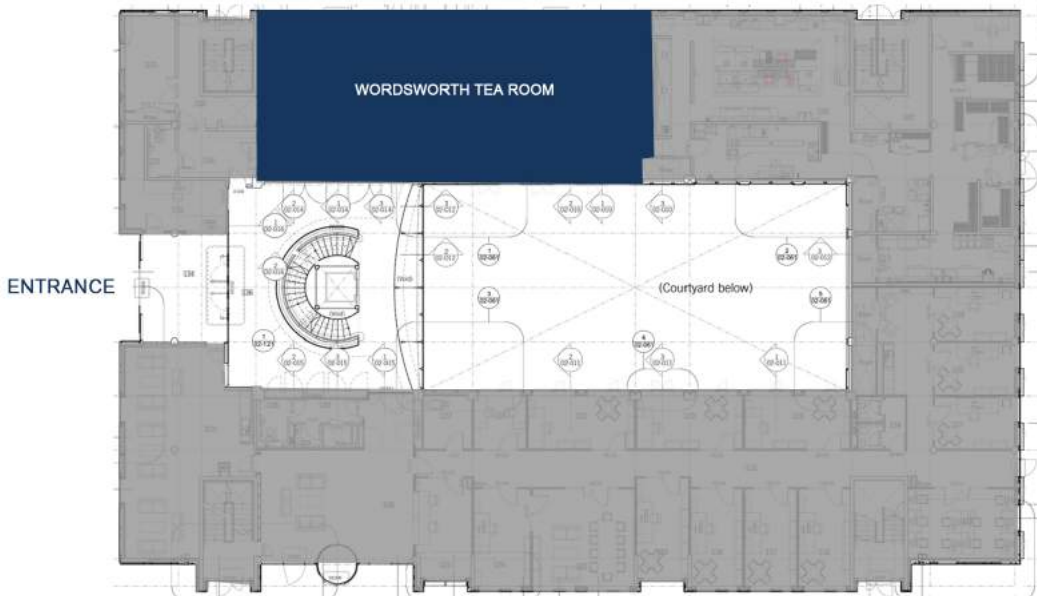
Wordsworth Tearoom



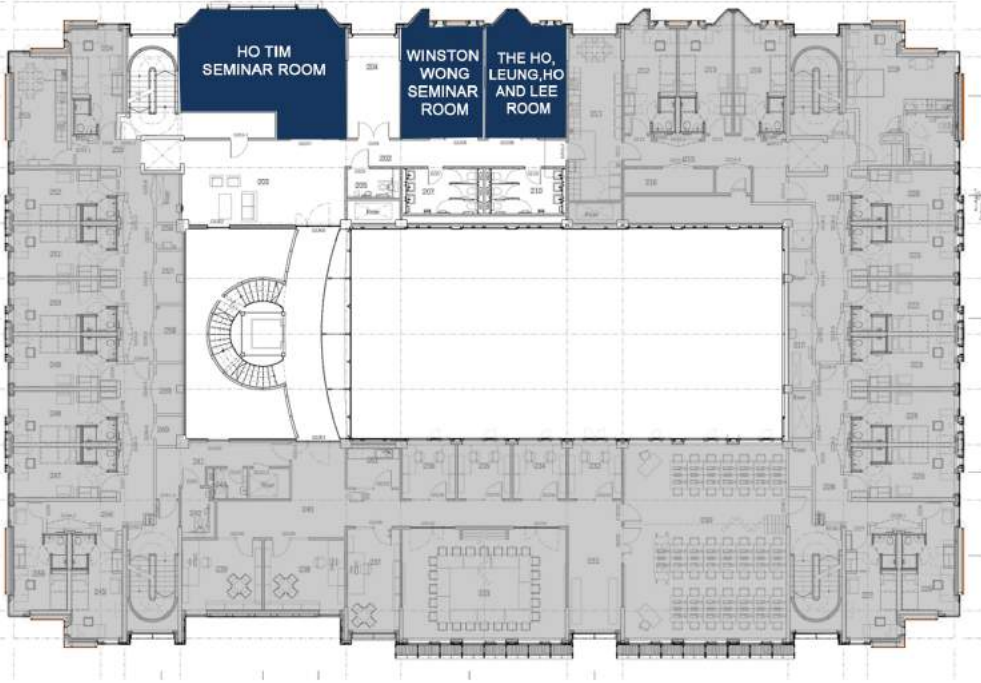
Lower Ground Floor



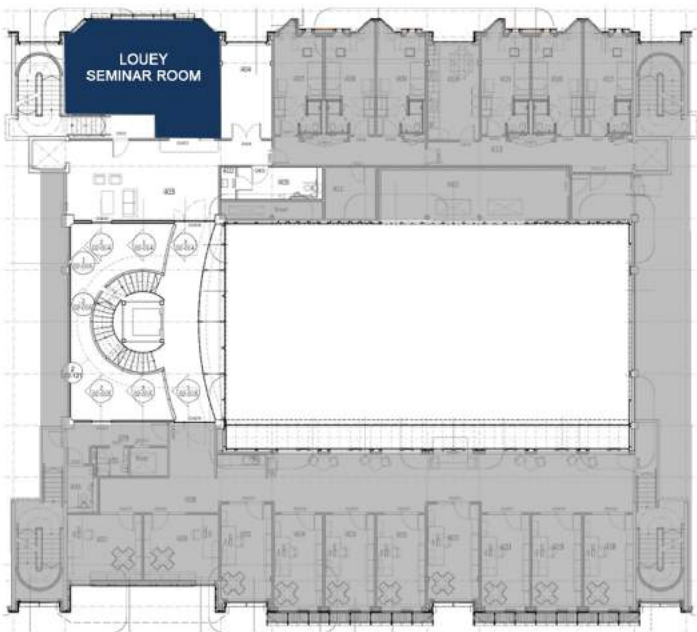
Ground Floor










First Floor



Second Floor



	Theatre	Classroom	Boardroom	U Shape	Rounds	Cabaret	Banquet	Reception
								
Dickson Poon Building								
Lecture Theatre 1	50	-	-	-	-	-	-	-
Lecture Theatre 2	50	-	-	-	-	-	-	-
<i>Theatre 1 and 2 combined</i>	100	-	-	-	-	-	-	-
Louey Seminar Room	40	25	25	20	-	-	-	-
Ho Tim Seminar Room	40	25	25	20	-	-	-	-
Winston C S Wong Seminar Room	20	10	10	8	-	-	-	-
The Ho, Leung, Ho and Lee Room	20	10	10	8	-	-	-	-
Wordsworth Tearoom	-	-	-	-	100	80	120	200
Roof Terrace	-	-	-	-	-	-	-	60



Food & Beverage



Food and Beverage

Whether it be a light lunch in the summer, or a warm hearty meal on those chilly winter days, at St Hugh's College we have a variety of menus to suit.

Here are just a few examples of refreshments and lunches we can provide for you:

- Tea and Coffee with fruit, biscuits or cake
- Light snacks
- Platters of delicious sandwiches
- Traditional Afternoon Tea
- Finger buffet of hot and cold items
- A packed lunch for those City excursions
- A one or two course hot meal

Or why not treat your guests to a three course served lunch or dinner?



Wordsworth Room



Dining Hall

Drinks Receptions

With a capacity of up to 300 people and a variety of different locations across College, we have a space to suit your drinks reception whether it be after a Conference, prior to a dinner or as a stand alone celebration.



Wordsworth Room (Main Building)

Evening Meals, Fine Dining and Celebrations

We pride ourselves on the quality, taste and presentation of our food. For private dinners, or as an upgrade on our 24 hour conference package, we offer a decadent three, four or five course served seated meal in one of our beautiful private dining rooms from 15-200 guests.

We are happy to discuss bespoke menus, and cater for a variety of larger events.



Boardroom (Main Building)



Dining Hall

The traditional College Dining Hall is available for breakfast, lunches and served gala dinners which are all lovingly created by our team of talented chefs.

The room is set with banquet tables, a raised Head table, and leads directly onto our Rose Terrace which is the perfect location for drinks on a summers evening.

During term time this room is only available on Saturdays.



Dining Hall 1928



Dining Hall- Main Building



 Instagram [chefs-at-sthughs](https://www.instagram.com/chefs-at-sthughs)



A photograph of a bedroom interior. A large bed with white linens and two dark red pillows is the central focus. To the left, a window with blue curtains is visible. To the right, a striped armchair sits next to a wooden chest of drawers. The room has light-colored walls and a framed picture. A large blue diamond graphic is overlaid on the image, with the word 'Accommodation' written in white text across its center. There are also four smaller diamond shapes (two light green and two dark grey) arranged around the central blue diamond.

Accommodation



Stay at St Hugh's College

Visit Oxford



With a mixture of single & double bedrooms, both ensuite and shared facilities, St Hugh's College is situated in 14.5 acres of landscaped gardens, just a short walk from the city centre. Oxford is a beautiful city of stunning architecture, history and culture. Expect to find fascinating museums, galleries and plenty of parks, gardens and green spaces in which to relax.

Some background to Oxford University

Oxford is not a campus university, so it is not all located on one site. It is made up of many different buildings, including academic departments, Colleges and Halls, located around the centre of Oxford. Many University buildings, gardens, libraries and museums, as well as many of the Colleges, are open to visitors during the day, although please note that they may have varying opening hours, fees and rules for groups.

www.ox.ac.uk 2018

Useful Information

Breakfast is usually 8am-10am

Check in is from 2pm at the Porters Lodge

Check out is by 10am at the Porters Lodge

Our Porters Lodge is open 24 hours a day to assist with your stay. 01865 274900

Things to do in Oxfordshire



Visitor Information Centre

15-16 Broad Street

Oxford

Oxfordshire

OX1 3AS

www.experienceoxfordshire.org

or call 01865 686430 for latest opening times

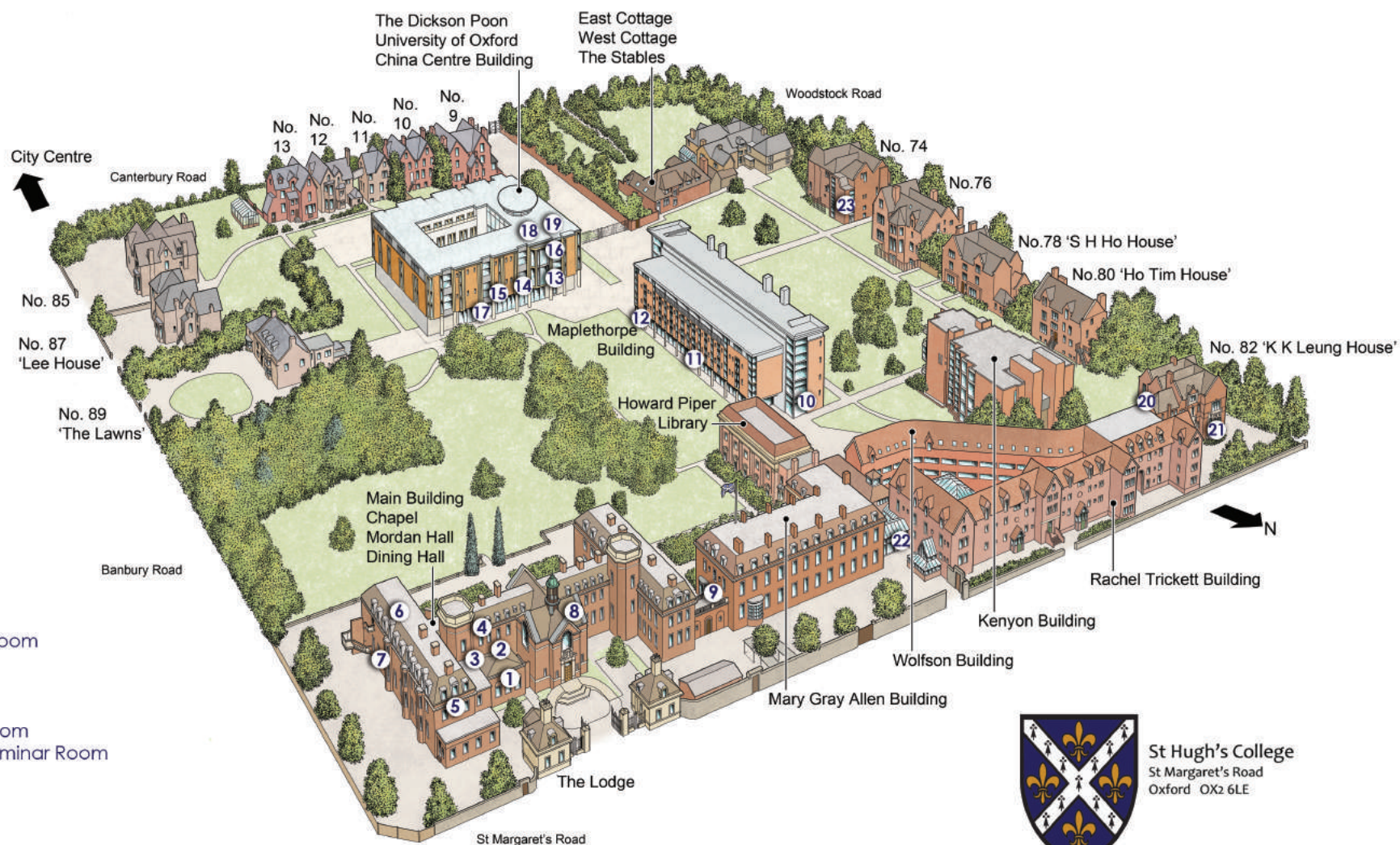
- City Walking tours
- Ghost trails
- Cycle hire & tours
- River punting
- Boat trips & river cruises
- Sightseeing bus tours
- World class shopping
- Theatre shows
- ...plus much more

Whatever your interest, Oxford has something to entertain, educate and delight both you and your event delegates when outside of the conference room.



Key

- 1 Wordsworth Room
- 2 Emily Wilding Davison Room
- 3 Boardroom
- 4 Hamlin Rooms 1 & 2
- 5 Dobbs Rooms 1 & 2
- 6 Mordan Hall
- 7 Dining Hall
- 8 Chapel
- 9 MGA Lecture Room
- 10 Maplethorpe (MTB) Seminar Room
- 11 Maplethorpe (MTB) Hall
- 12 Maplethorpe (MTB) Office
- 13 Ho Tim Seminar Room
- 14 Winston C S Wong Seminar Room
- 15 The Ho, Leung, Ho and Lee Seminar Room
- 16 Louey Seminar Room
- 17 Wordsworth Tea Room
- 18 Lecture Theatre 1
- 19 Lecture Theatre 2
- 20 Old Law Library
- 21 82 Seminar Room
- 22 The Bar
- 23 74 Seminar Room



St Hugh's College
St Margaret's Road
Oxford OX2 6LE